



*Total Solution Provider in Saw Device*

---

# SL07524AV

75.0MHz IF SAW Filter  
24.35MHz Bandwidth  
Revision 0 : 28. Oct. 2008



- Electrical Characteristics
  - Package Dimensions
  - Testing Environment
  - Frequency Characteristics
- 

**SAWNICS Inc.**

460 Cheonheung-ri, Seonggeo-eup, Cheonan-si, Chungcheongnam-do, 330-836 / Korea.  
Tel: +82 41 550 9372 / Fax: +82 41 550 9399 / [www.sawnics.com](http://www.sawnics.com)

## □ Electrical Characteristics

### Maximum Ratings

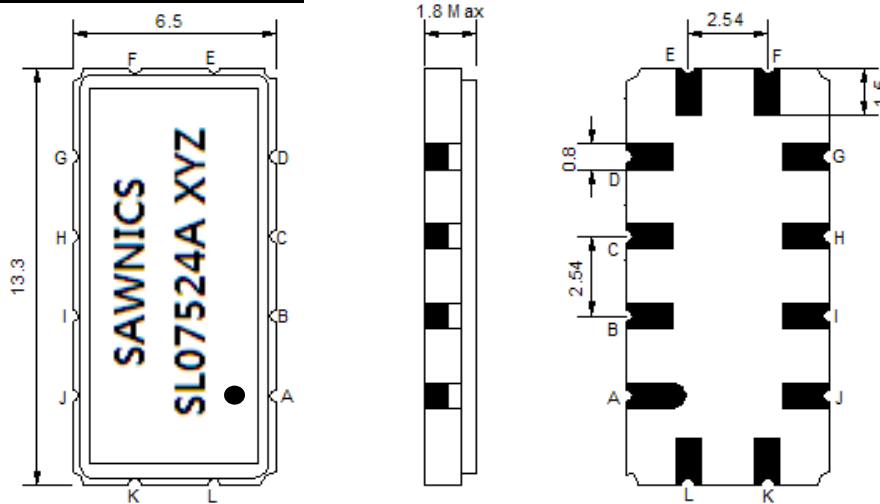
Parameters Description	Unit	Minimum	Typical	Maximum
Operating Temperature Range	°C	-30	-	80
Storage Temperature Range	°C	-40	-	85
Maximum DC Voltage	V	-	-	10
Maximum Input Power	dBm	-	-	10
Source Impedance (single ended) <sup>(1)</sup>	Ω	-	50	-
Load Impedance (single ended) <sup>(1)</sup>	Ω	-	50	-
Package type & size	V			
Length x Width	mm <sup>2</sup>	-	13.3 x 6.5	-
Height	mm	-	-	1.8

### Electrical Specification

Parameters Description	Unit	Minimum	Typical	Maximum
Center Frequency (Fo)	MHz	-	75.0	-
Insertion Loss at Fo	dB	-	16.00	18.00
Temperature Coefficient	ppm/°C	-	-86	-
Amplitude Ripple within fo ±11.2MHz	dB <sub>p-p</sub>	-	0.45	0.80
Group Delay Variation within fo ±11.2 MHz	nsec	-	26	35
Absolute Delay at Fo	µsec	-	0.95	-
Bandwidth at -1.0 dB	MHz	23.0	24.35	-
Bandwidth at -3.0 dB	MHz	-	25.15	-
Bandwidth at -40.0 dB	MHz	-	29.10	30.3
Ultimate Attenuation		-	45	-

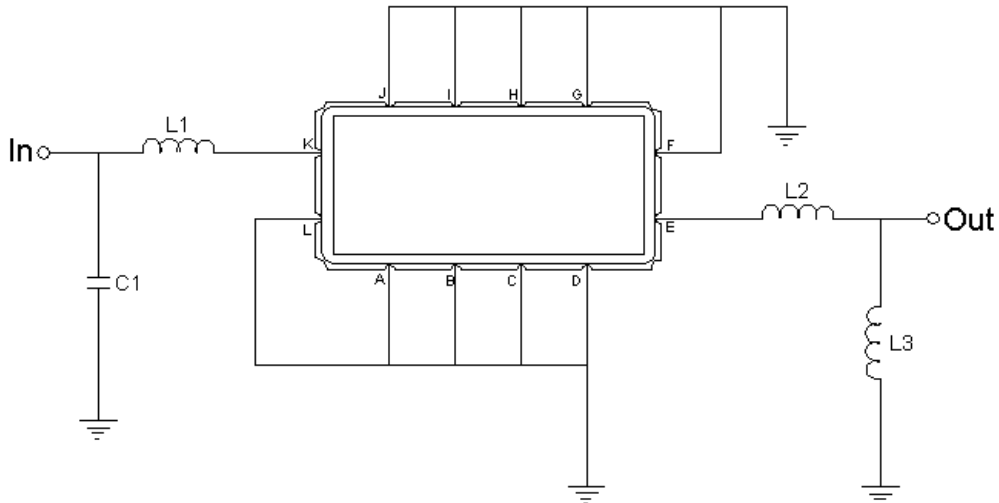
**Notes :** (1) With Matching Network (Ref. Testing Environment Circuit as shown below).  
Those impedances could be modified with different impedance values and/or structures, if necessary.

**□ Package Dimensions**



Pin Description	
A, B, C, D, F, G, H, I, J, L	Ground
K	Input
E	Output

**□ Testing Environment**



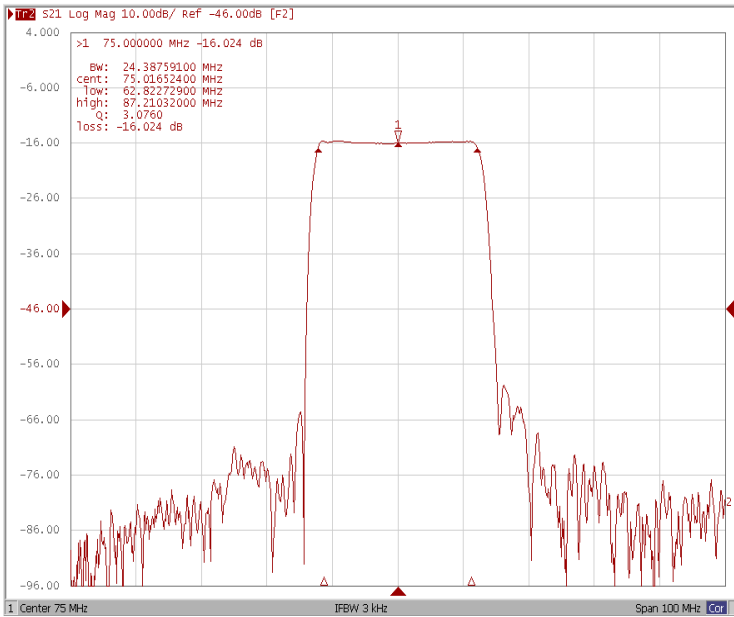
Test Fixture & Values	
Input	L1=100nH ,C1=13pF
Output	L2=27nH ,L3=100nH
Source/Load Impedance	50 Ω



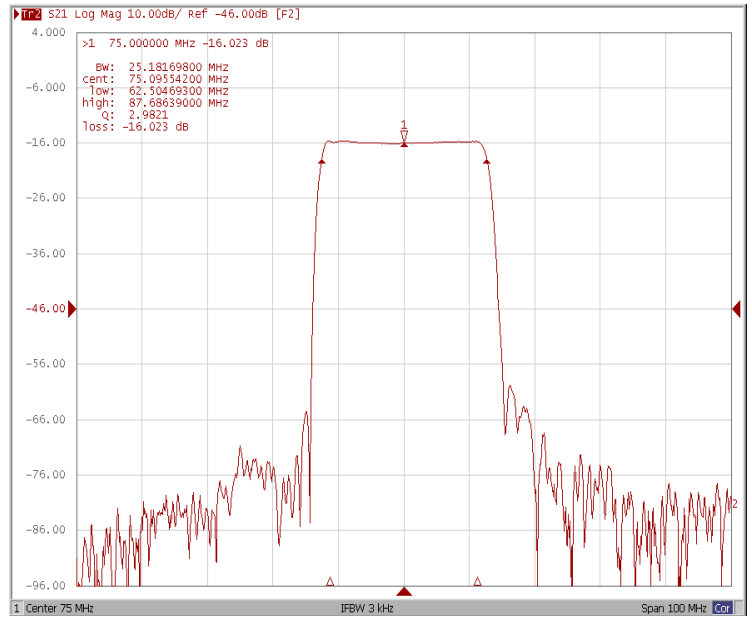
### Frequency Characteristics

#### Frequency Response

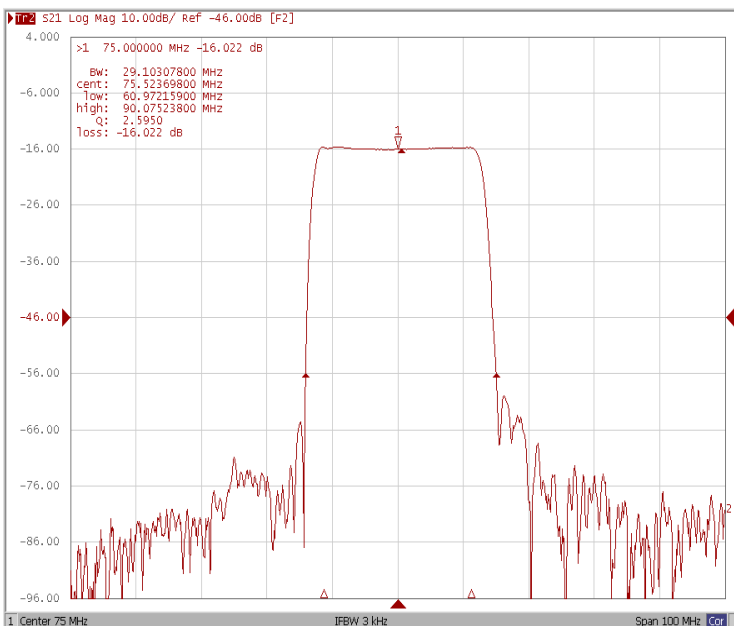
#### Bandwidth at -1.0 dB



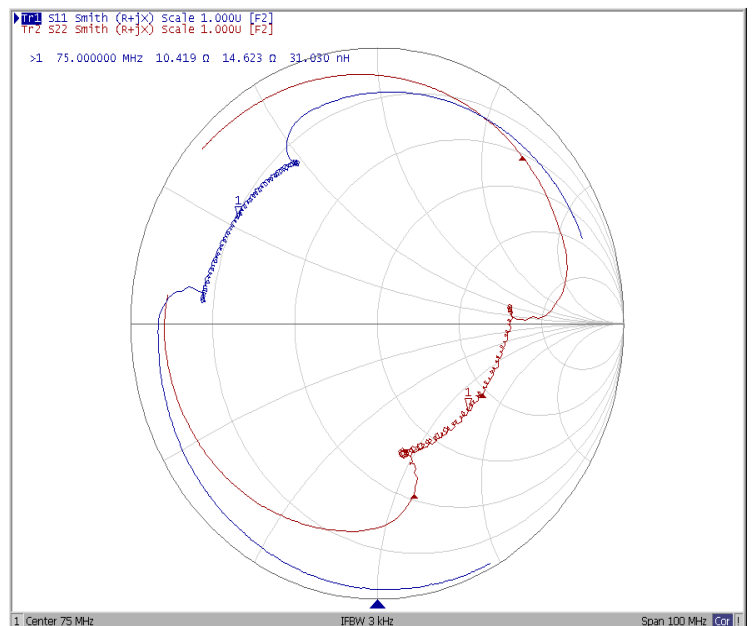
#### Bandwidth at -3.0 dB



#### Bandwidth at -40.0 dB



#### SMITH

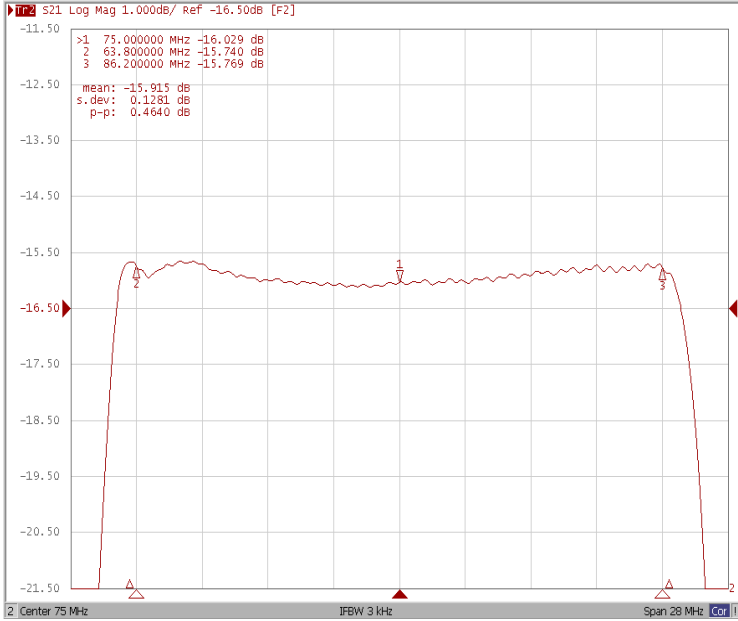




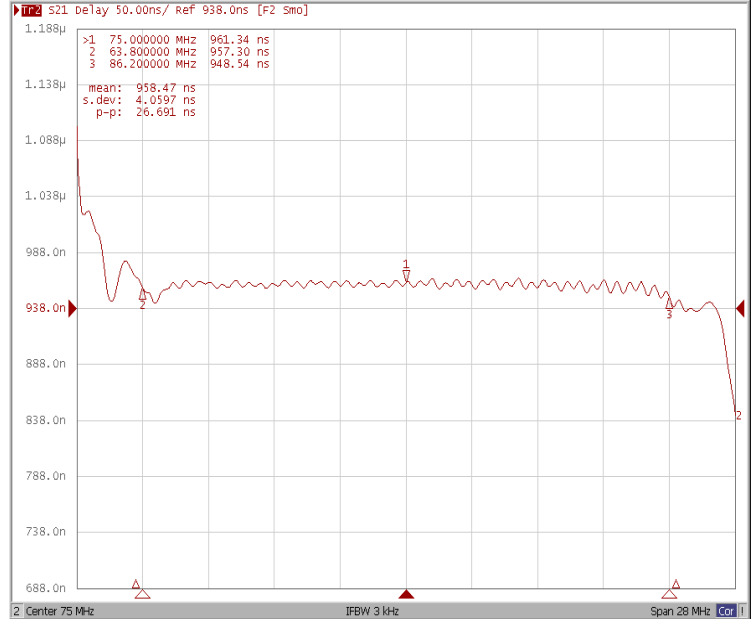
**Frequency Characteristics**

**Frequency Response**

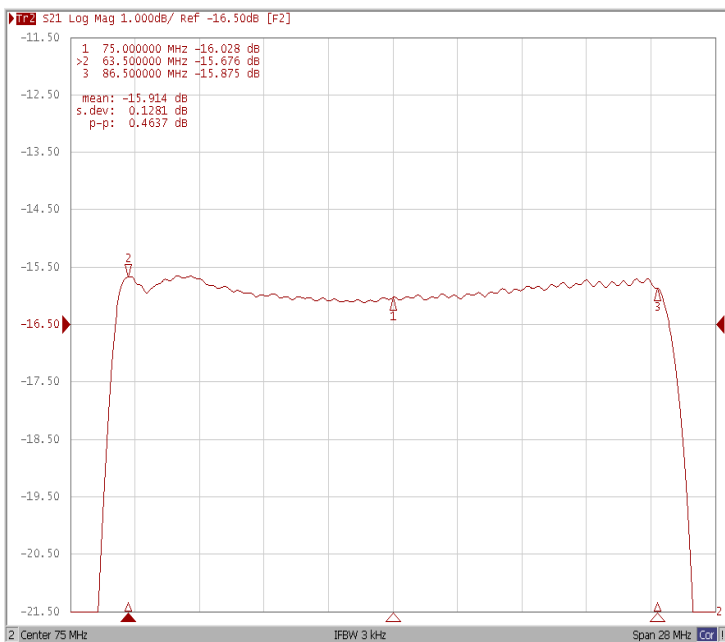
**Ripple Variation Fo±11.2MHz**



**Group Delay Variation Fo±11.2MHz**



**Ripple Variation Fo±11.5MHz**



**Group Delay Variation Fo±11.5MHz**

